

SCHOOL SHOES

School shoes should be smart and practical. They should also be entirely black.

The table below illustrates the type of shoes which are allowed and not allowed in school and serves as a visual guide only.



DO ✓	DON'T ✗
 <p>A smart, black trainer-type shoe with no obvious branding.</p>	 <p>No all-black black trainers.</p>
 <p>A sturdy shoe with covered toes and a strap.</p>	 <p>Slip-on dolly-type shoes. They are not sturdy enough and fall off children's feet when playing. Socks also get very wet with this type of shoe.</p>
 <p>An all black school shoe with grip on the base.</p>	 <p>Formal shoes with flat bases. These are easy to slip in.</p>
 <p>Low, flat shoes.</p>	 <p>No boots</p>

JEWELLERY

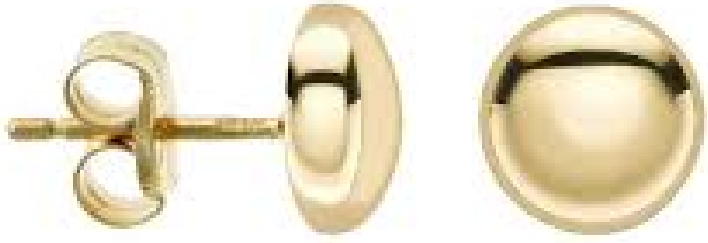




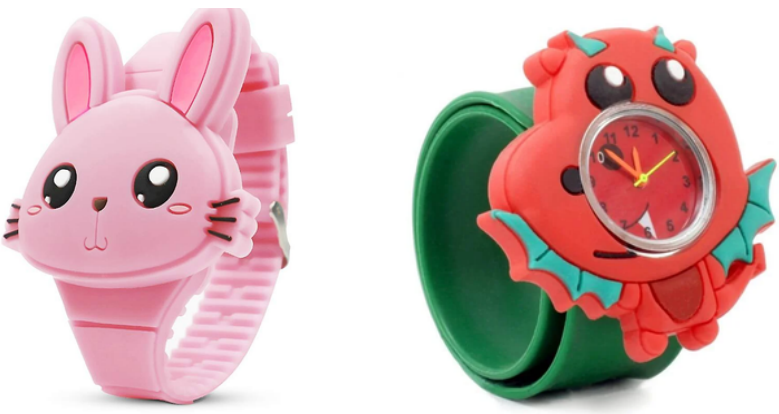




We don't allow any jewellery at school other than a set of earrings and a simple wrist watch.

All jewellery needs to be removed for sports. Children need to be able to take thier own earrings out and put them back in again before and after PE. If they are too young to do this, please ensure earrings aren't worn on PE days.

Children should not wear any rings, anklets or bracelets to school.

Taweez necklaces are allowed in school.

DO ✓	DON'T ✗
 <p>A simple gold stud.</p>	 <p>No intricate designs or hoops.</p>
 <p>A simple silver stud.</p>	 <p>No shapes or studs with stones in.</p>
 <p>A simple, smart wrist watch.</p>	 <p>Watches which are bulky on the wrist or have functions to "play with".</p>
 <p>A simple digital watch with no game features,</p>	 <p>No smart watches of any kind.</p>

HAIR ACCESSORIES

Hair accessories should be in school colours only (Grey, white, black or red).

They should be simple in design and small in size.

Hair should be natural colours only. Dyed hair is not allowed in school.

DO ✓



Simple, smart accessories.

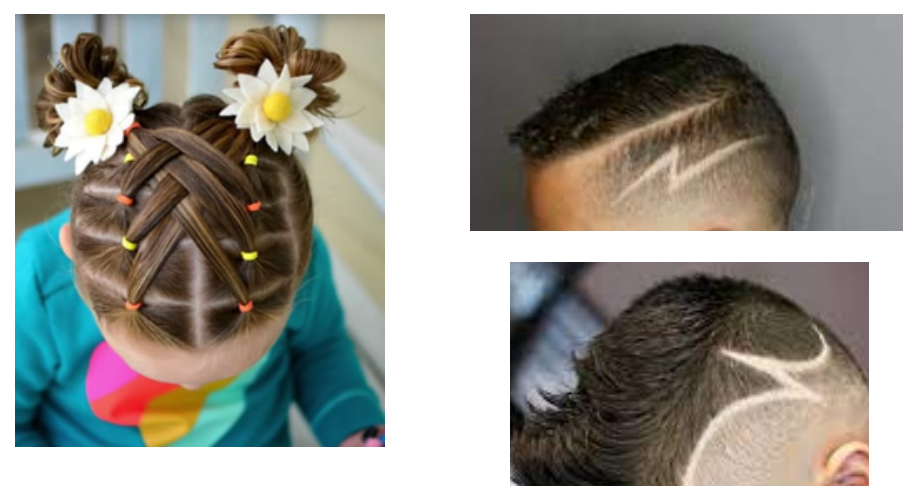
DON'T ✗



No large and overly decorative accessories.



If hair is up, it should be simple.



No hair-up designs which require lots of decoration / hair clips and grips. No shaved logos or lines.



School colours.



No bright colours or novelty accessories.



Softer fabrics.



No accessories which are too hard (metal, lots of hard plastic etc..)